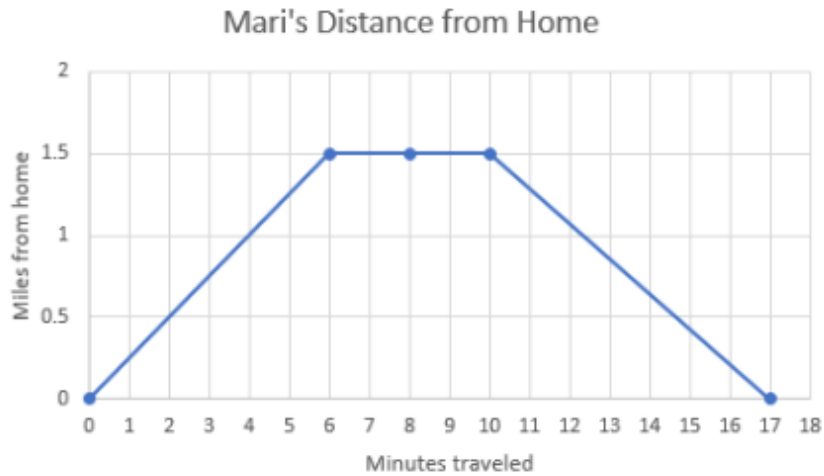


Name: _____

Date: _____

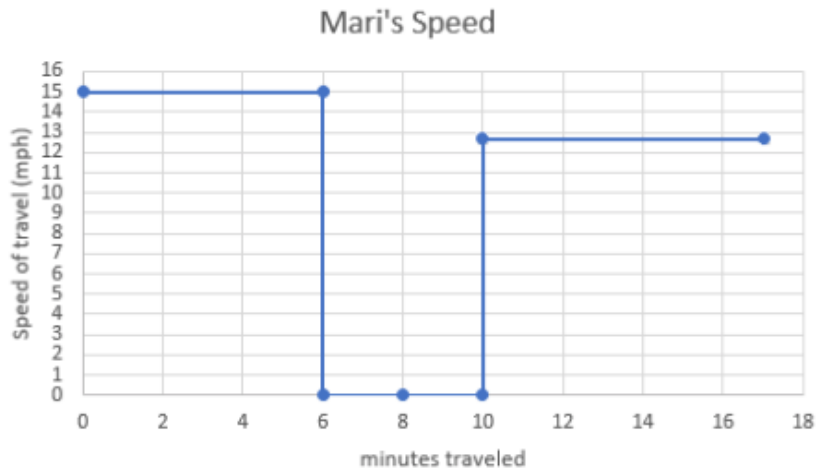
1. Mari drives from her home to the post office to mail a package.
 - a. The graph below shows Mari's *distance* from home as a function of time.



Use the graph to determine if each statement is true or false.

	True or False
Mari's distance from home is increasing from minute 0 to 6.	
Mari's distance from home is increasing from minute 6 to 10	
Mari is the same distance from home from minute 7 to 8	
Mari's distance from home is always <i>increasing</i> .	

b. The graph below shows Mari's *speed* on her trip as a function of time.

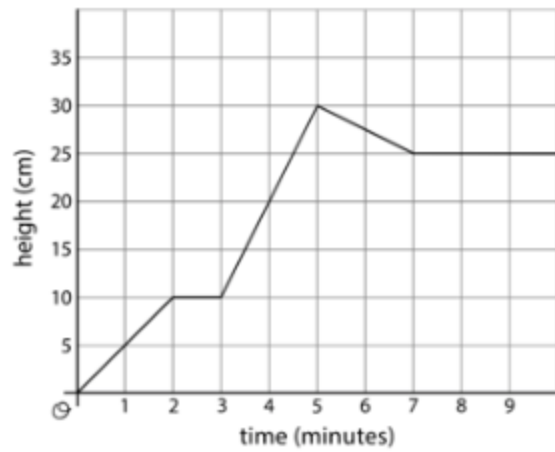


Use the graph to determine if each statement is true or false.

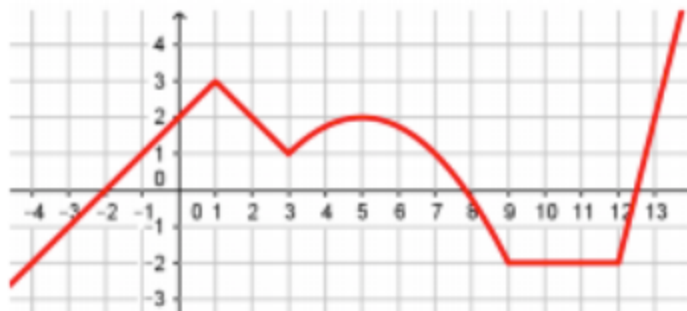
	True or False
Between minutes 0 and 6, Mari was not moving.	
Between minutes 6 and 10, Mari was not moving.	
Between minutes 0 and 6, Mari traveled at a speed of 15 miles per hour.	
Mari traveled to the post office at a faster speed than she traveled home from the post office.	

2. Jada fills her aquarium with water.

The graph shows the height of the water, in cm, in the aquarium as a function of time in minutes. Invent a story of how Jada fills the aquarium that fits the graph.



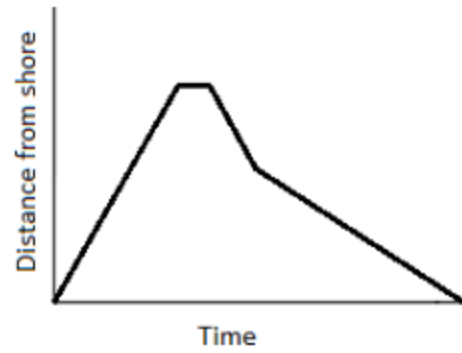
3. Use the graph below to answer the questions that follow.



Check the word(s) that accurately describe the graph over the given interval.

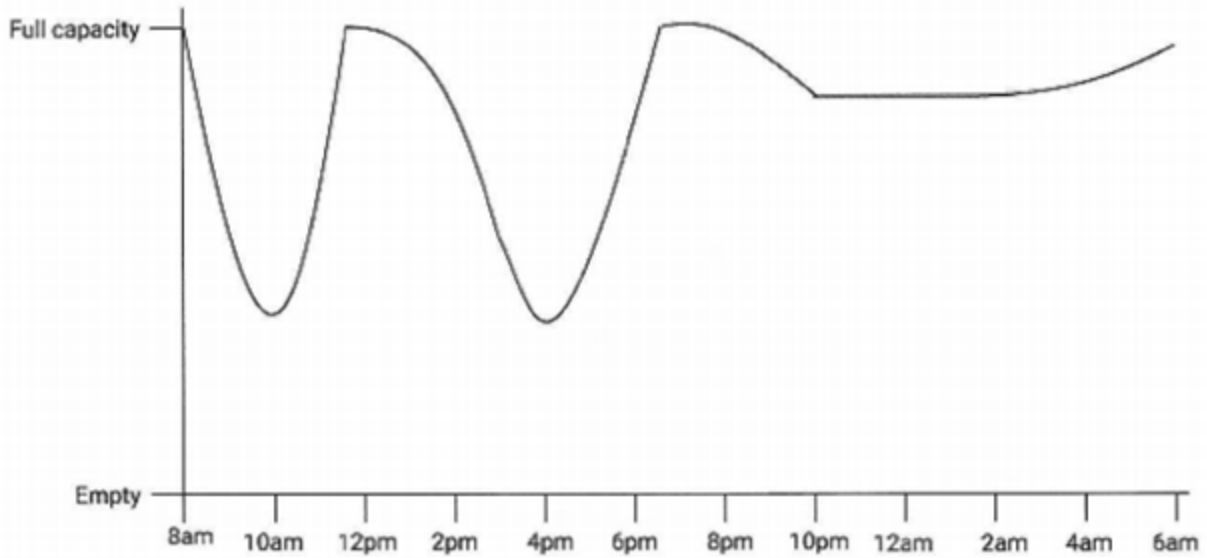
	Increasing	Decreasing	Linear
$-4 < x < 1$			
$3 < x < 5$			
$1 < x < 3$			
$9 < x < 12$			
$5 < x < 9$			
$12 < x < 13$			

4. Julia swims out to the center of a lake and then comes back to shore. The graph below shows her journey.



Write a story describing her swim to the center of the lake and back to shore.

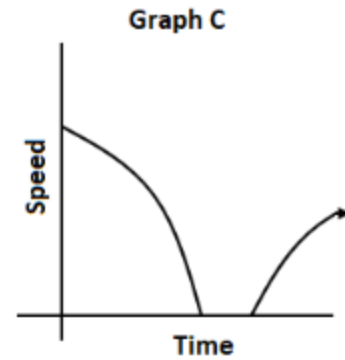
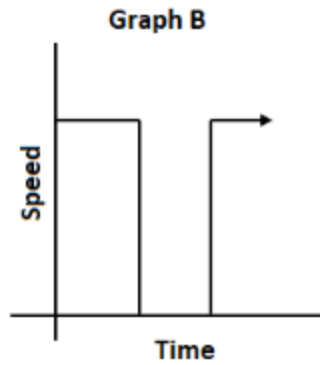
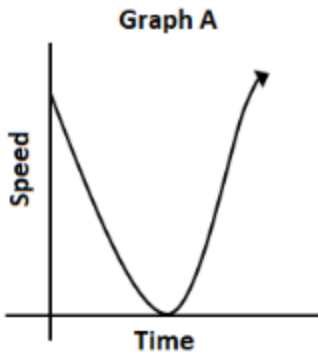
5. City Cafe, a popular 24-hour diner, kept track of how busy the restaurant was in the graph below.



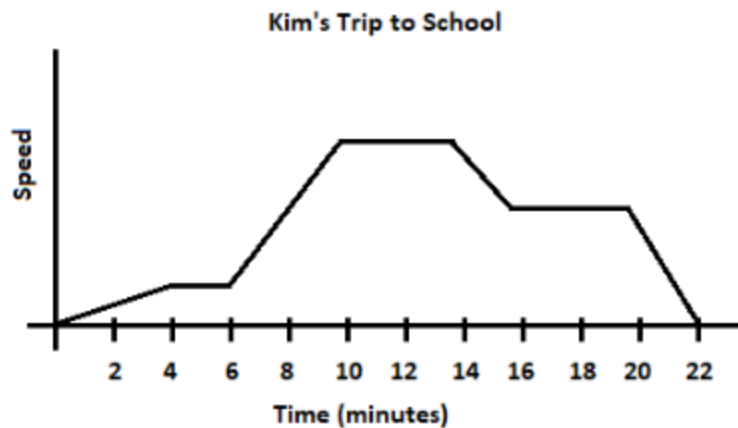
- How many times did City Cafe reach full capacity?
- When did City Cafe have the fewest number of customers?
- Between which times was City Cafe's number of customers most consistent?
 - 8AM to 12PM
 - 12PM to 4PM
 - 4PM to 8PM
 - 8PM to 12AM
 - 12AM to 4AM

6. A driver slowed down and came to a stop at a red light. After waiting for the light to turn green, she continued on her way.

Which graph below best represents her speed as a function of time? Explain your reasoning.



7. Use the graph below to answer the questions that follow.



- Over what interval is Kim's speed increasing the fastest?
- Over what interval(s) is Kim's speed decreasing?
- What is happening during the time interval between 10 and 14 minutes?

Sources

2. Open Up Resources [Grade 8 Unit 5 Lesson 6](#) — Practice Problem 2

[Grade 8 Unit 5 Lesson 6](#) is made available by [Open Up Resources](#) under the [CC BY 4.0](#) license. Copyright © 2017 Open Up Resources. Download for free at openupresources.org. Accessed Oct. 27, 2017, 10:59 a.m..